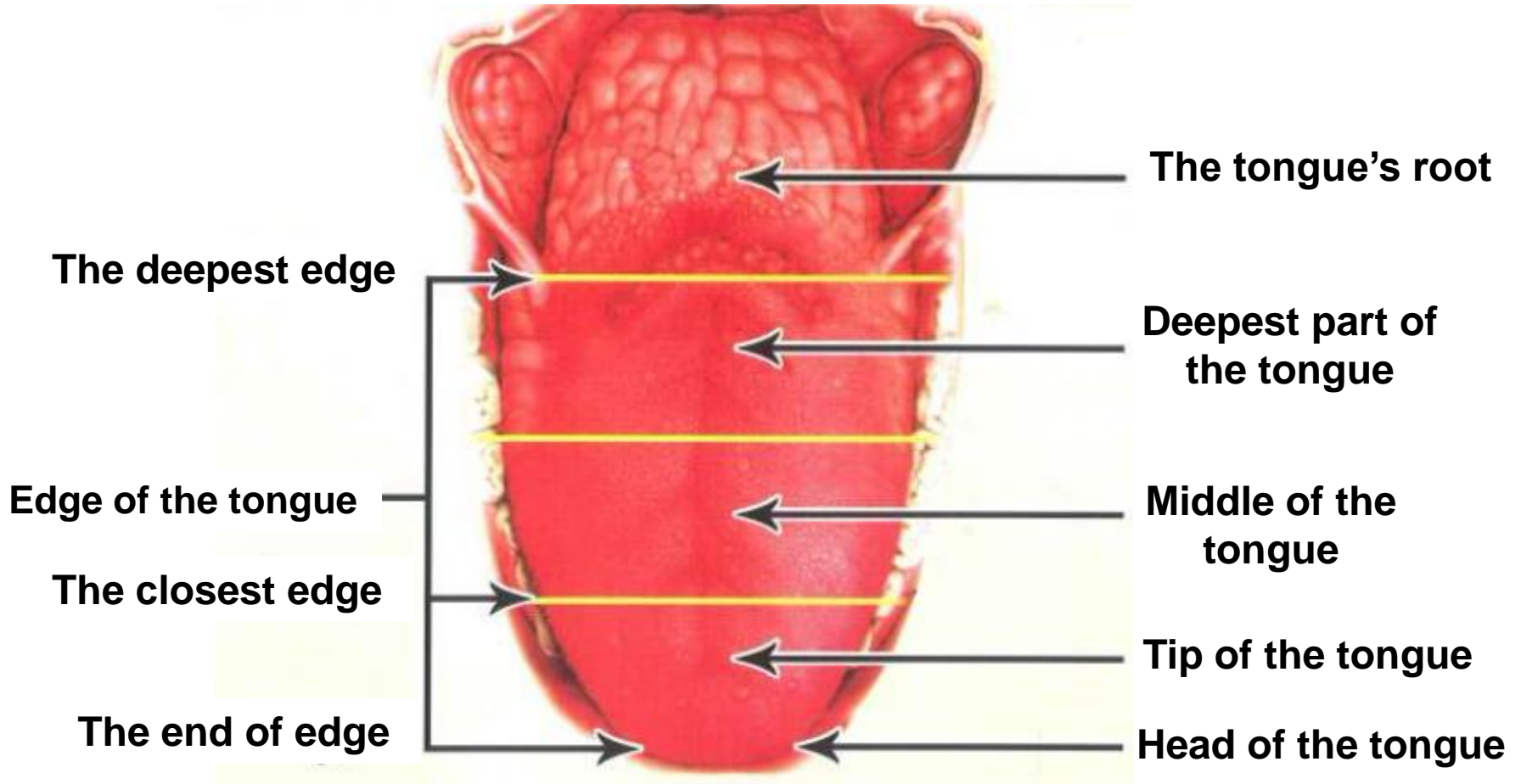


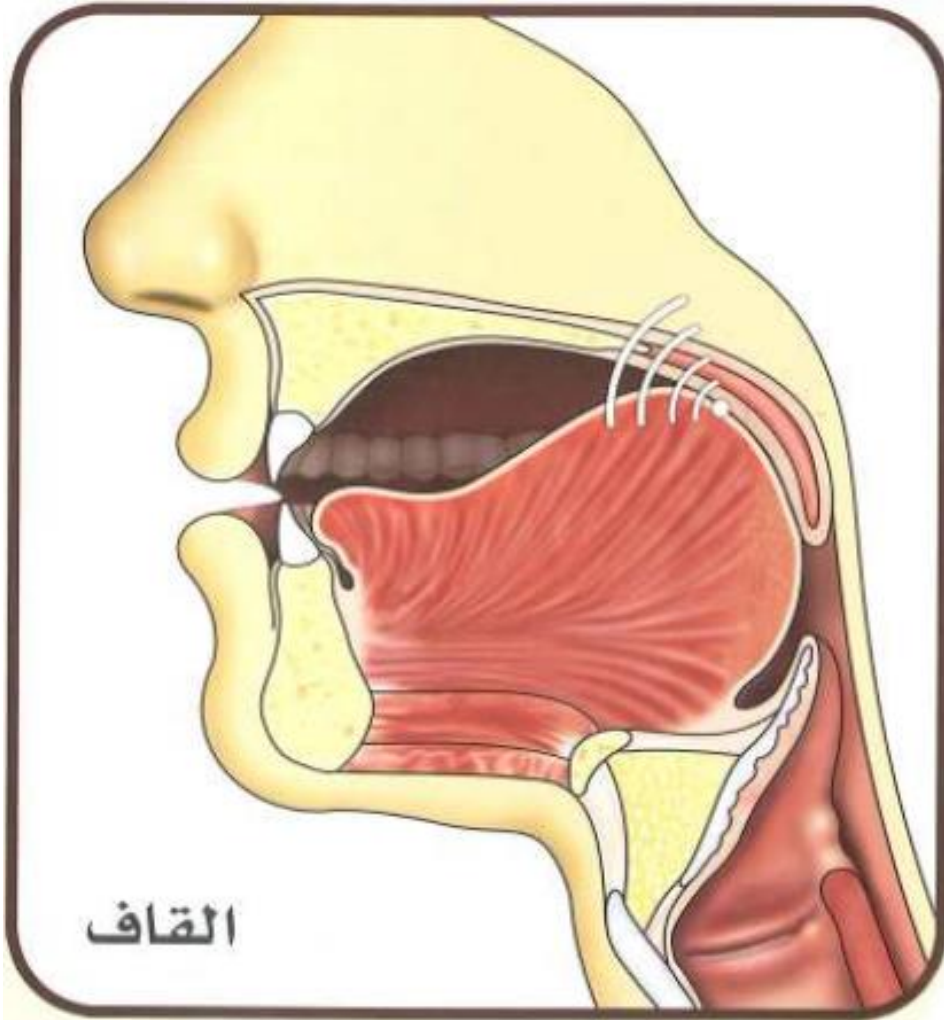
Tajweed Rules Of The Qur'an

**The letters which articulated
from the tongue.**

The Tongue Parts

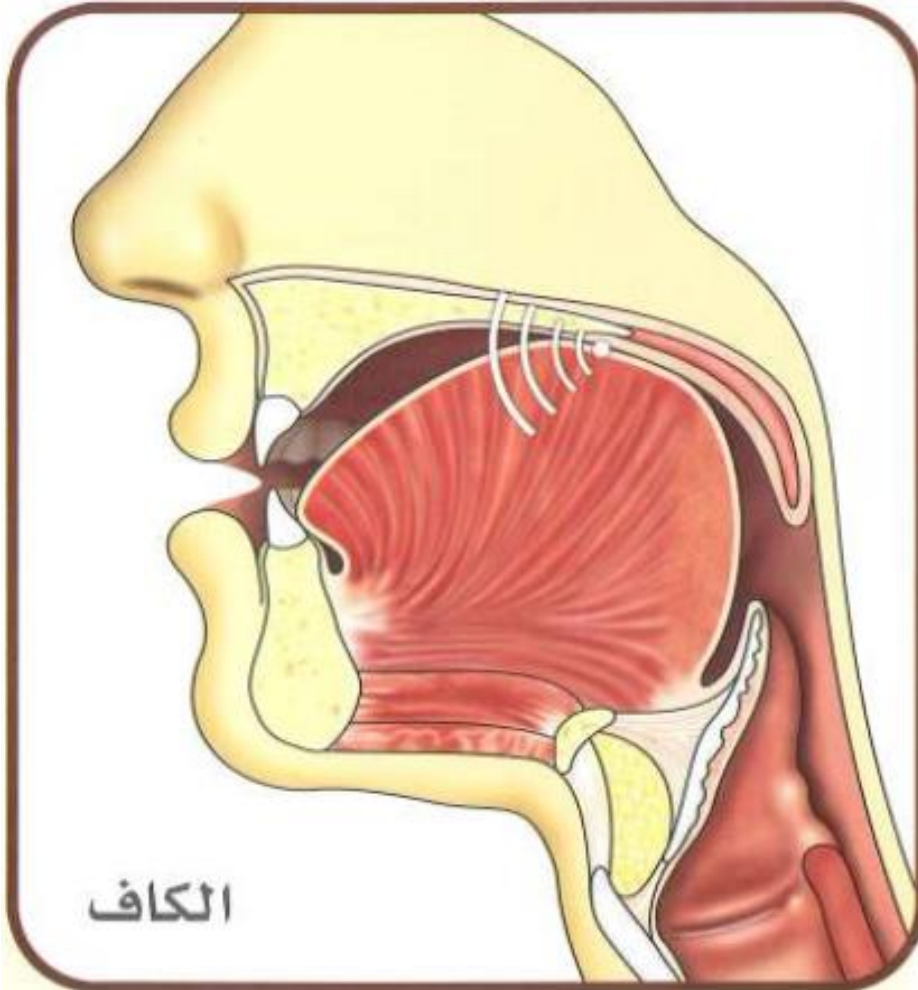


القاف



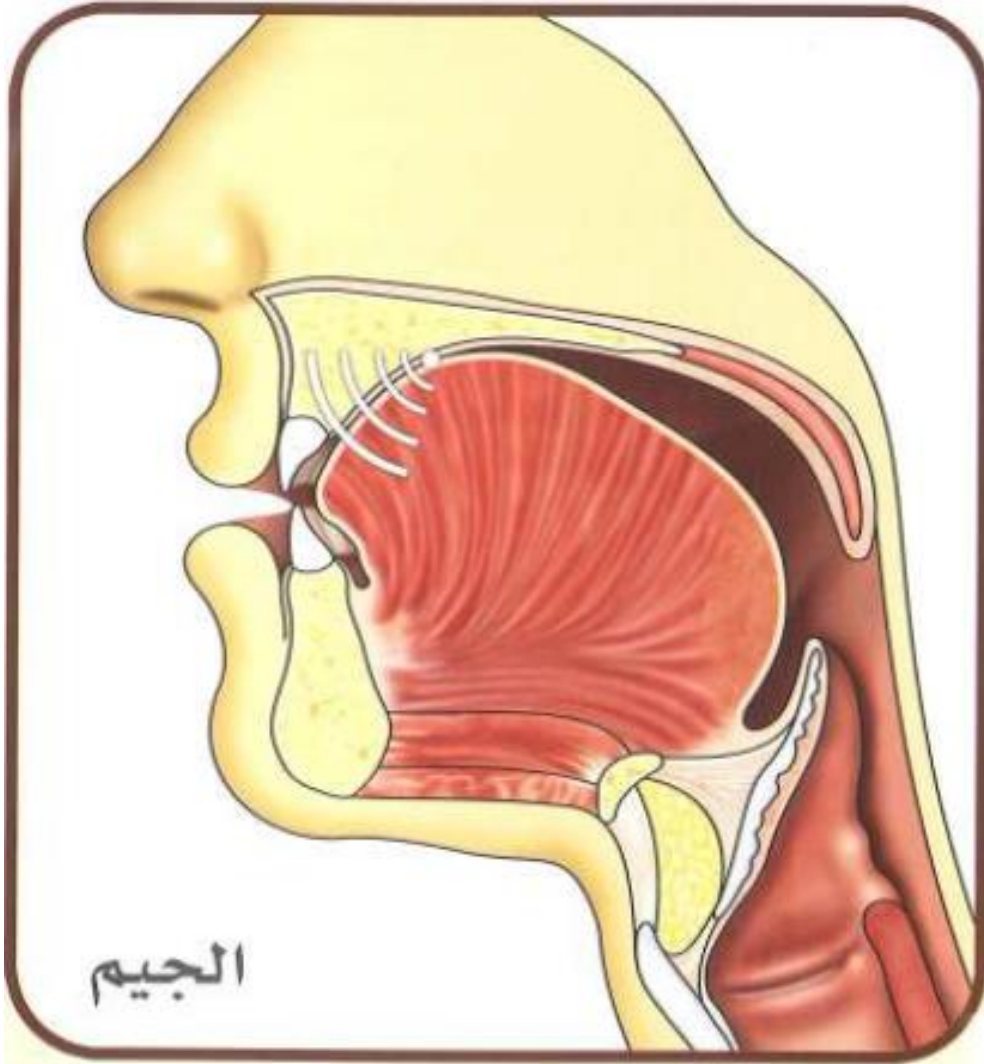
The deepest part of the tongue and what lies opposite to it of roof of the mouth (the soft palate).

الكاف



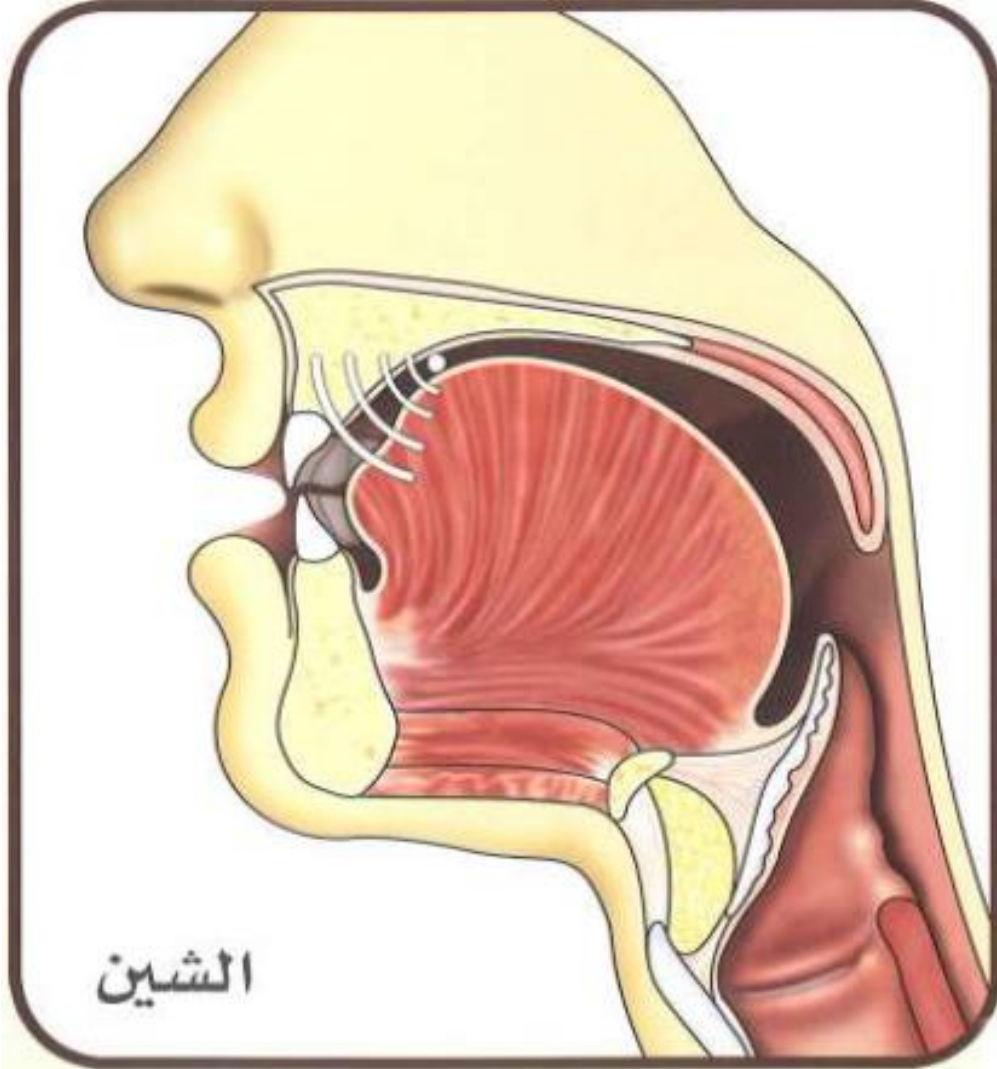
The deepest part of the tongue and what lies opposite to it of roof of the mouth (the soft and hard palate).

الجيم



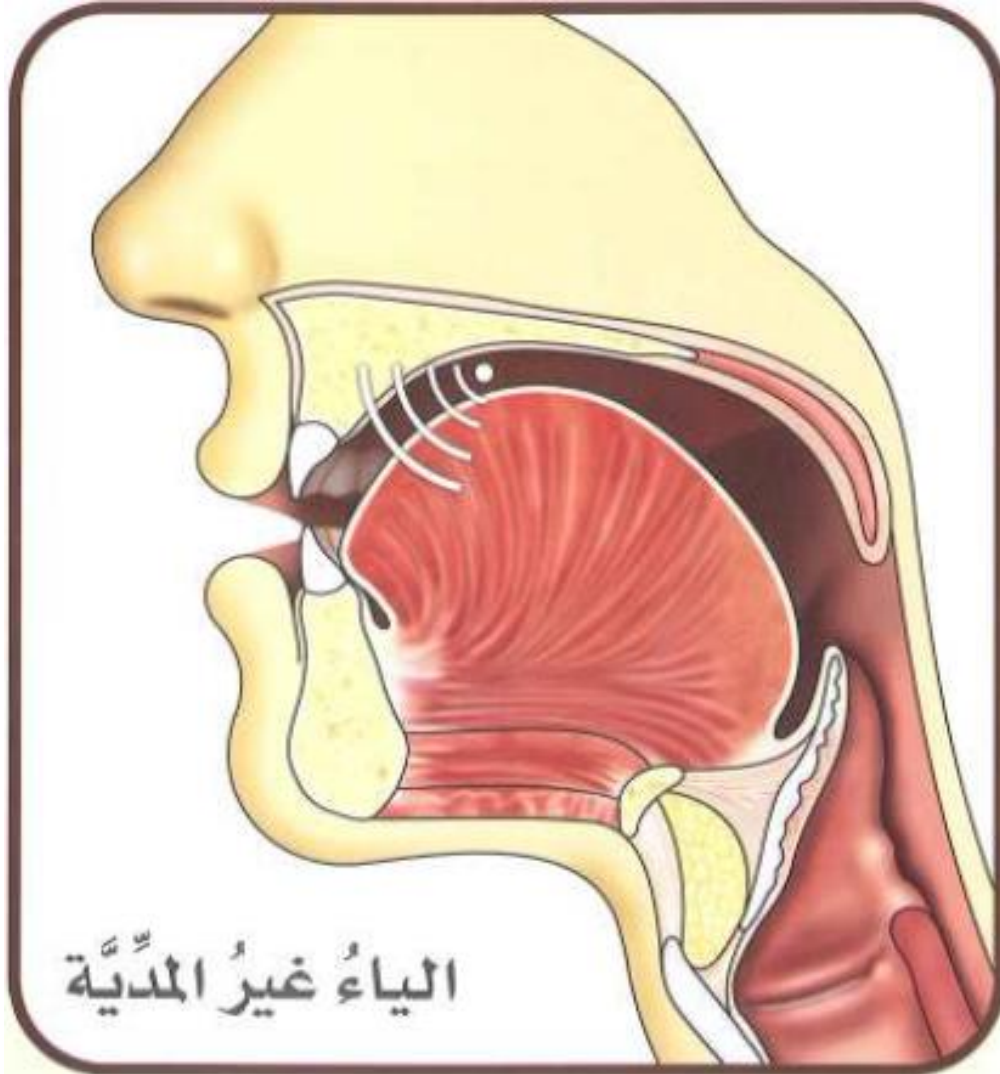
The middle part of the tongue and the roof of the mouth that lies opposite to it.

الشين



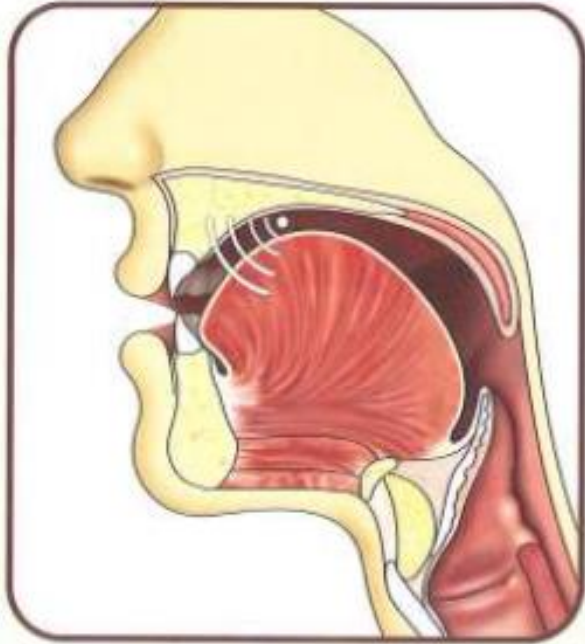
The middle part of the tongue and the roof of the mouth that lies opposite to it.

الياء

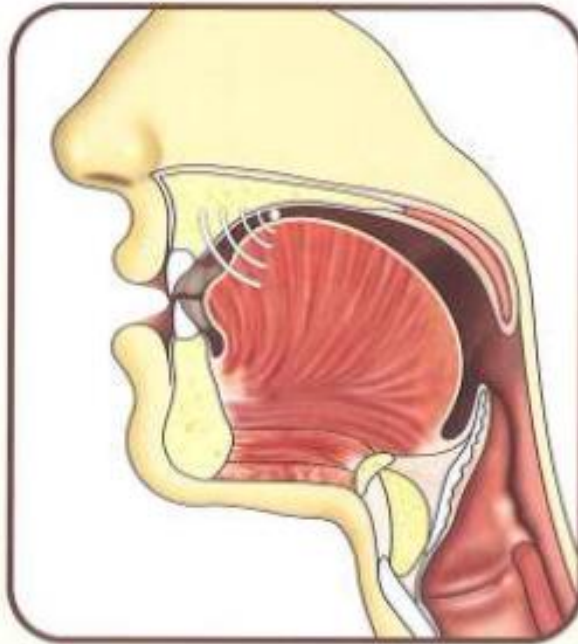


The middle part of the tongue and the roof of the mouth that lies opposite to it.

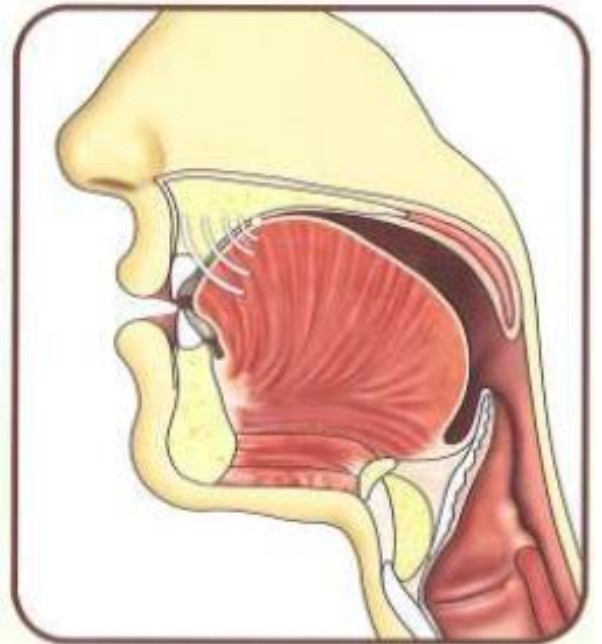
Comparison



الياء

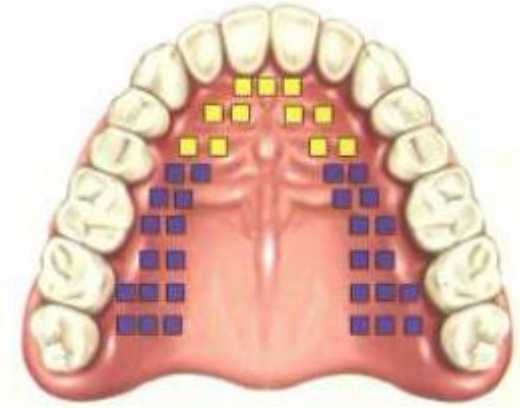
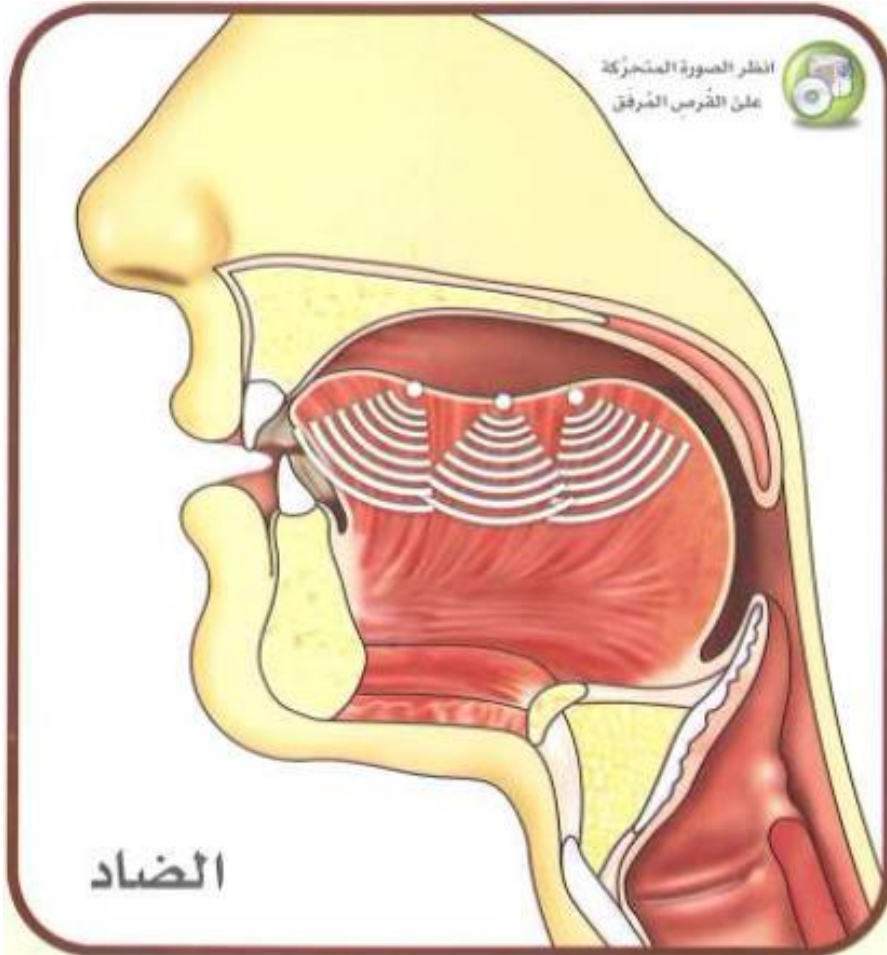


الشين



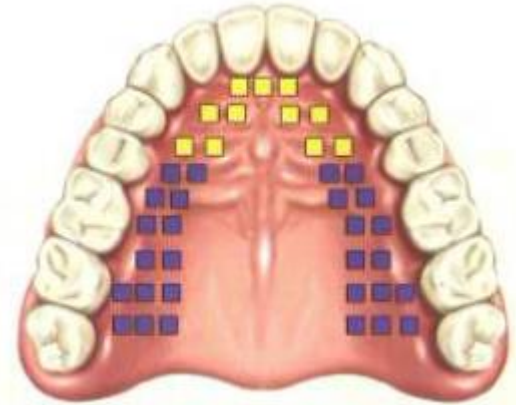
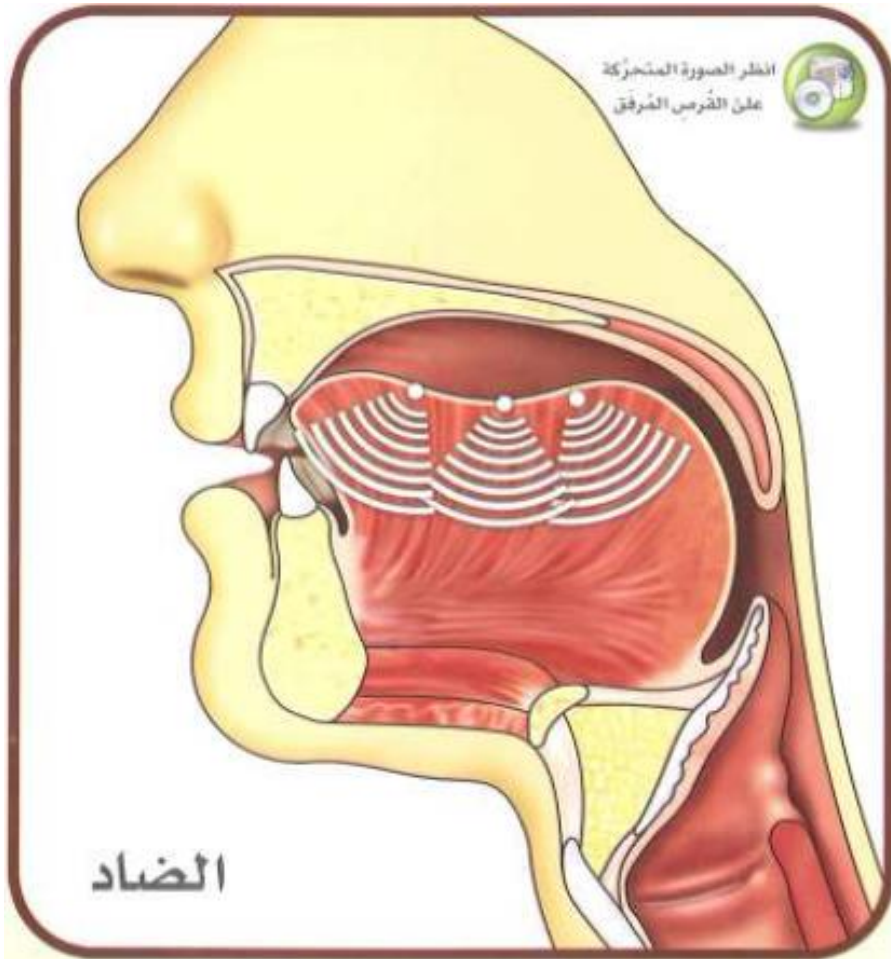
الجيم

الضاد



One of the sides or edges of the tongue and what lies opposite to it of the upper molar left, or right. It can also be articulated from both sides at the same time.

الضاد



Touch area without pressure.



Pressure area.

The space that occupied by الضاد from the tongue's edges

