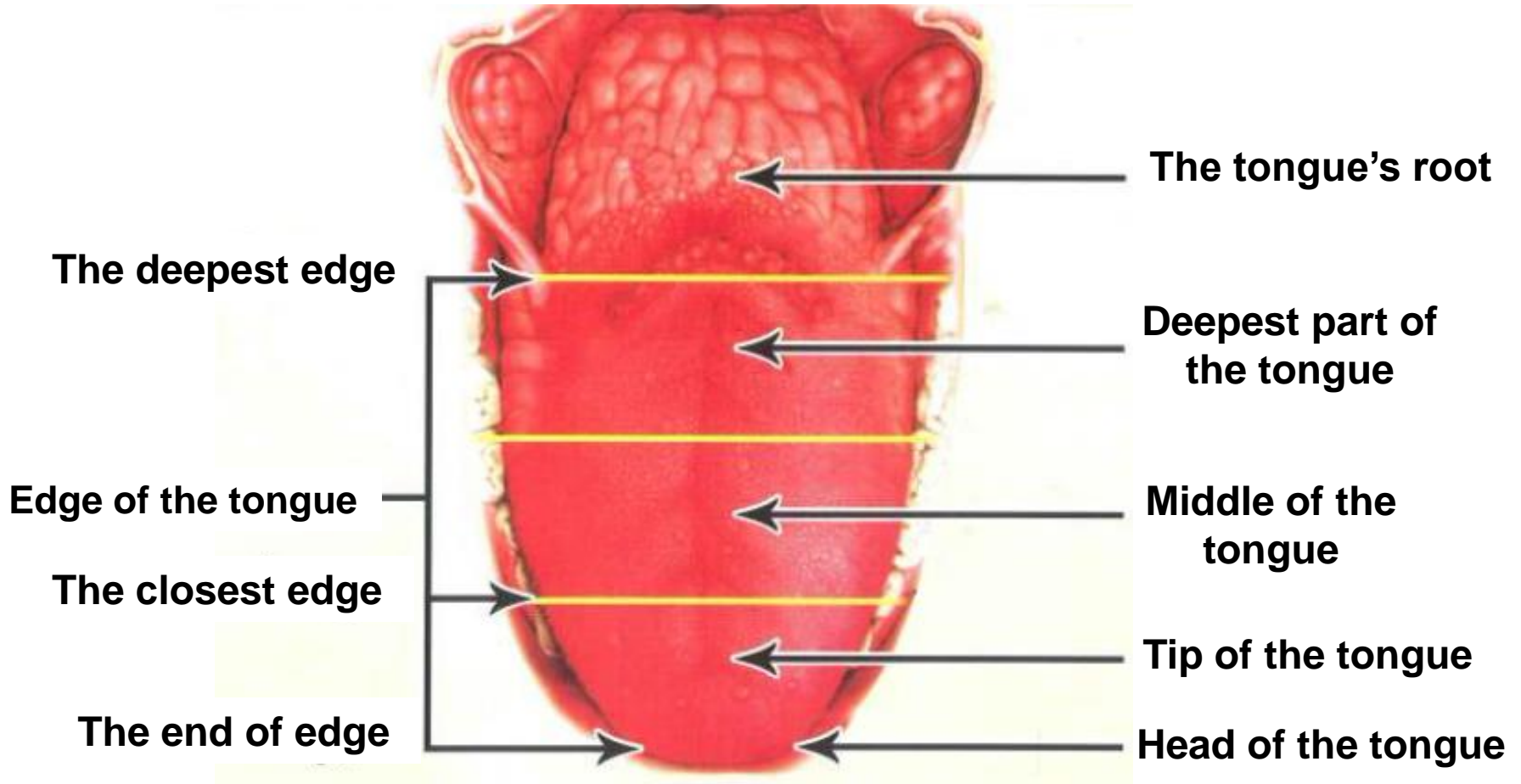
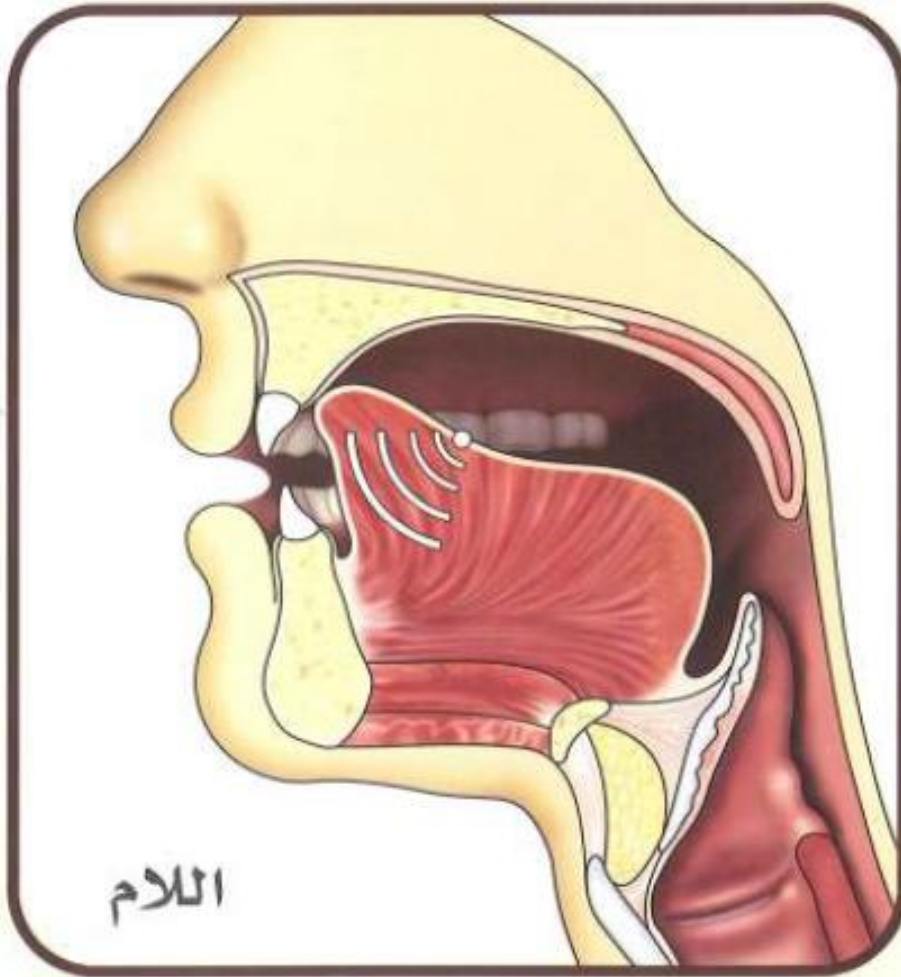


Tajweed Rules Of The Qur'an

The Tongue Parts



اللام



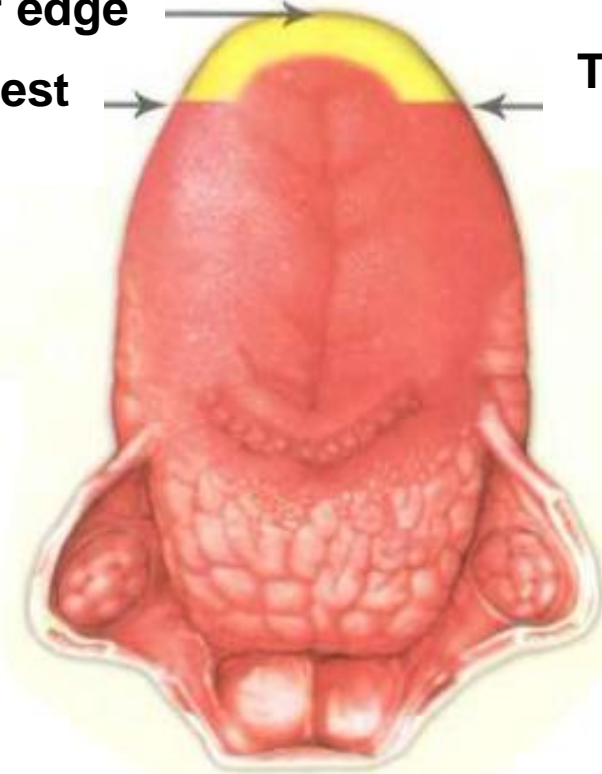
From the nearest part of the sides of the tongue (nearest to the lips) and the end of its tip.

The space that occupied by اللام from the tongue's edges



The end of edge

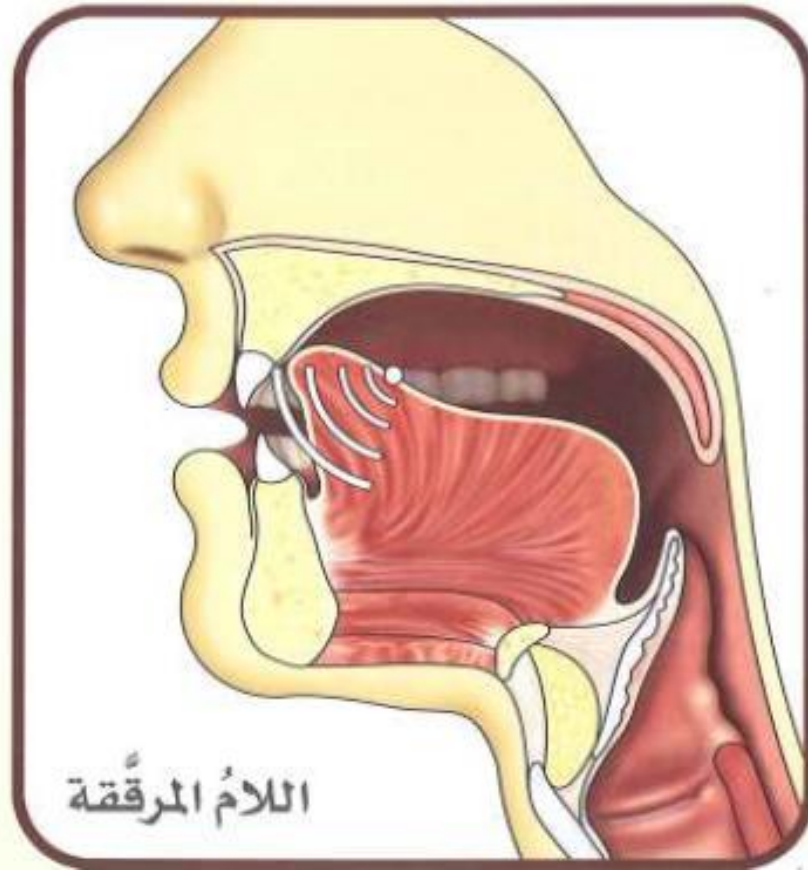
The closest edge



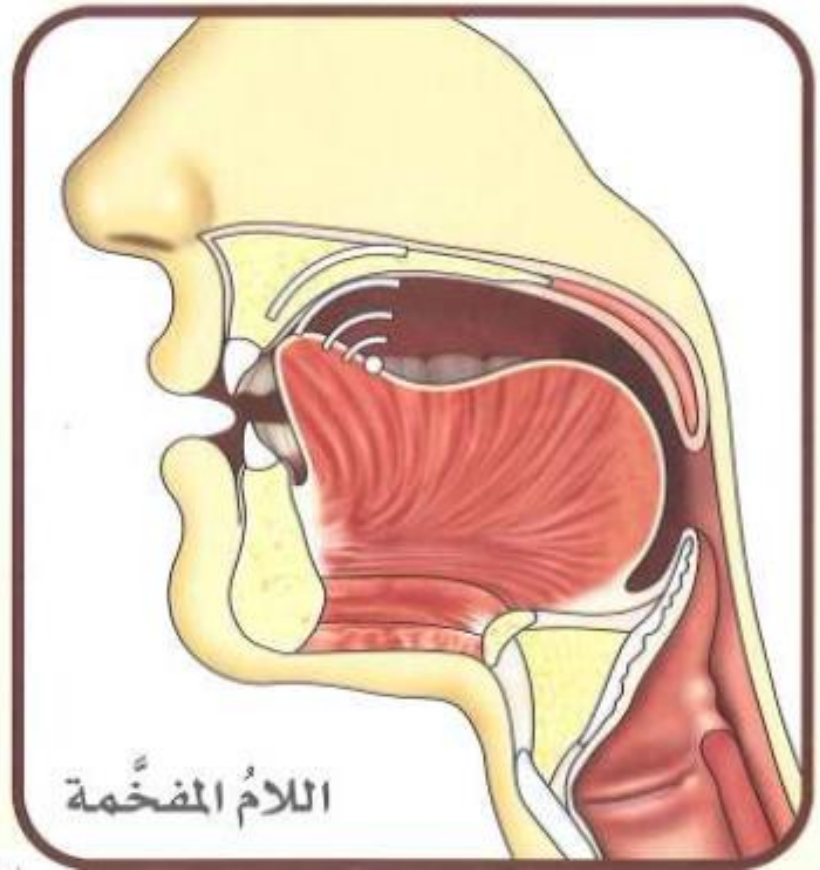
The closest edge

From the two closest edge of the tongue to the end of two edges and what lies opposite to it from the upper palate.

The different between Tafkheem and Tarqeeq in اللام

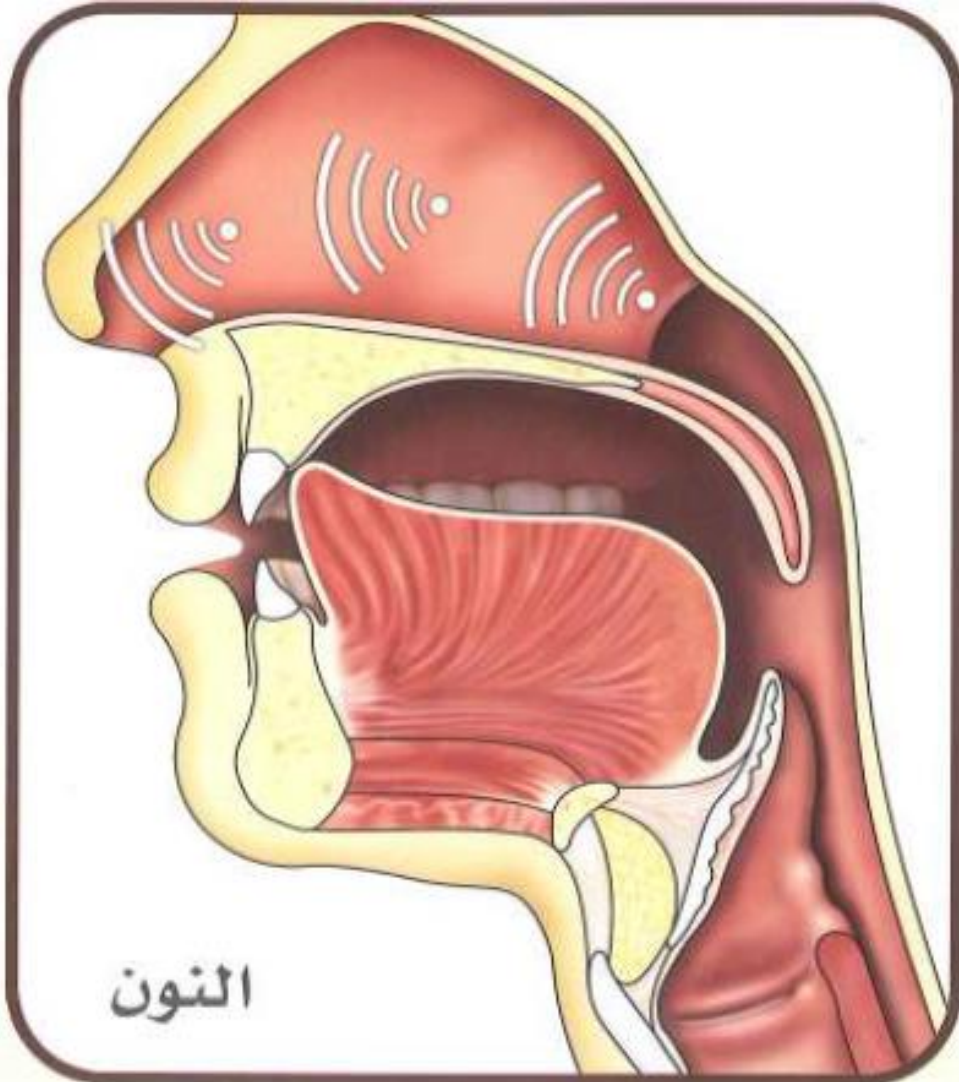


Tarqeeq



Tafkheem

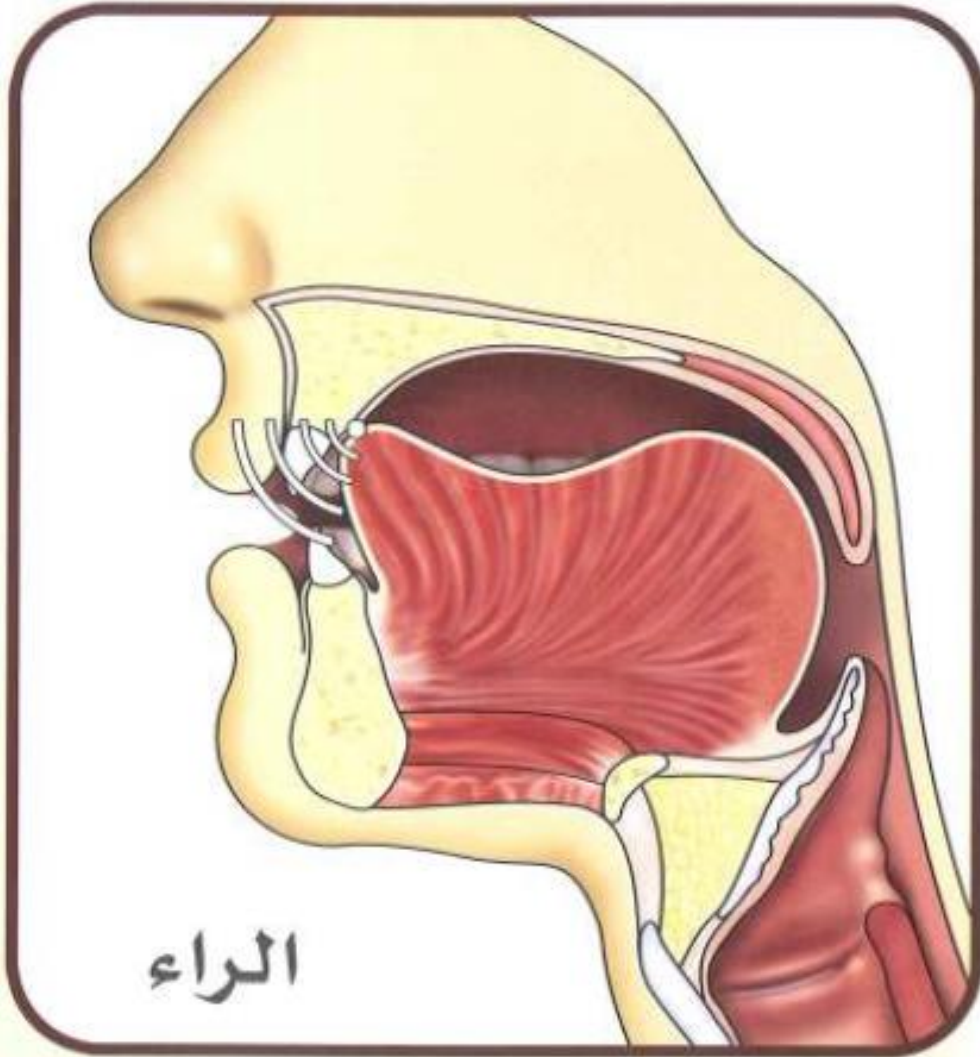
النون



From the tip of the tongue and what lies opposite to it of the gums of the two top front incisors, slightly under the articulation point of the لام.

Accompanying “Ghonna” which comes from noise.

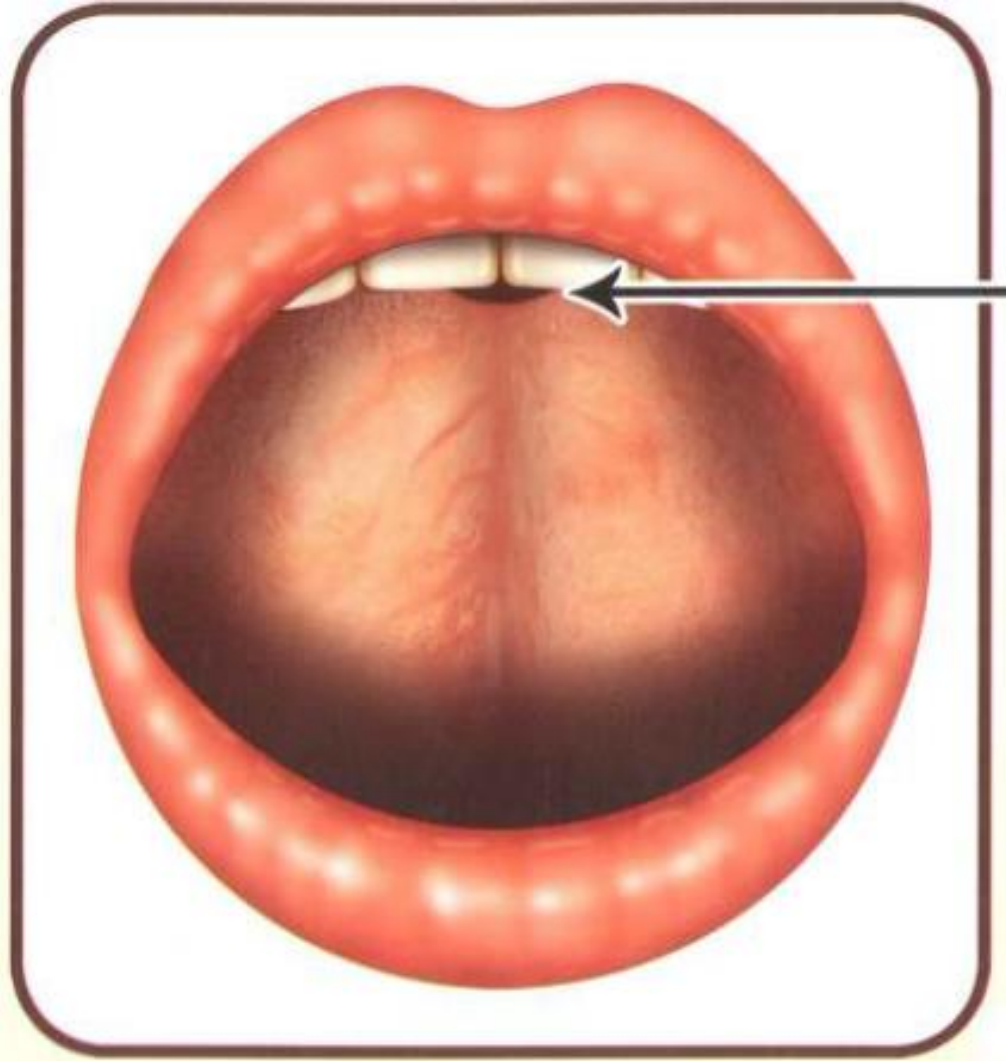
الراء



From the tip of the tongue and what lies opposite to it of the gum.

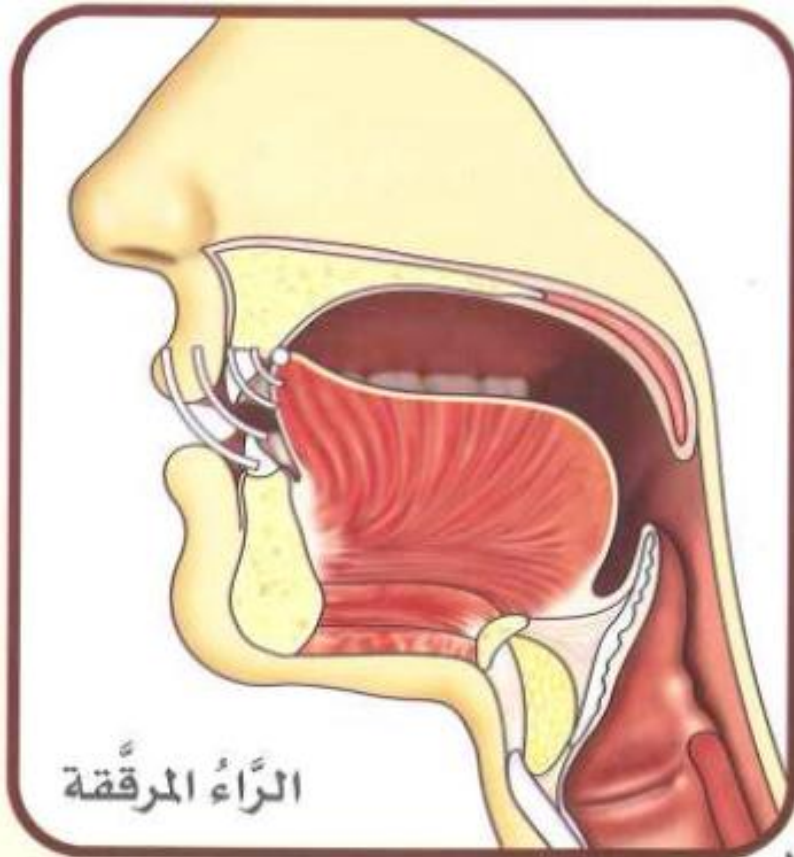
Near to the articulation point of النون.

الراء

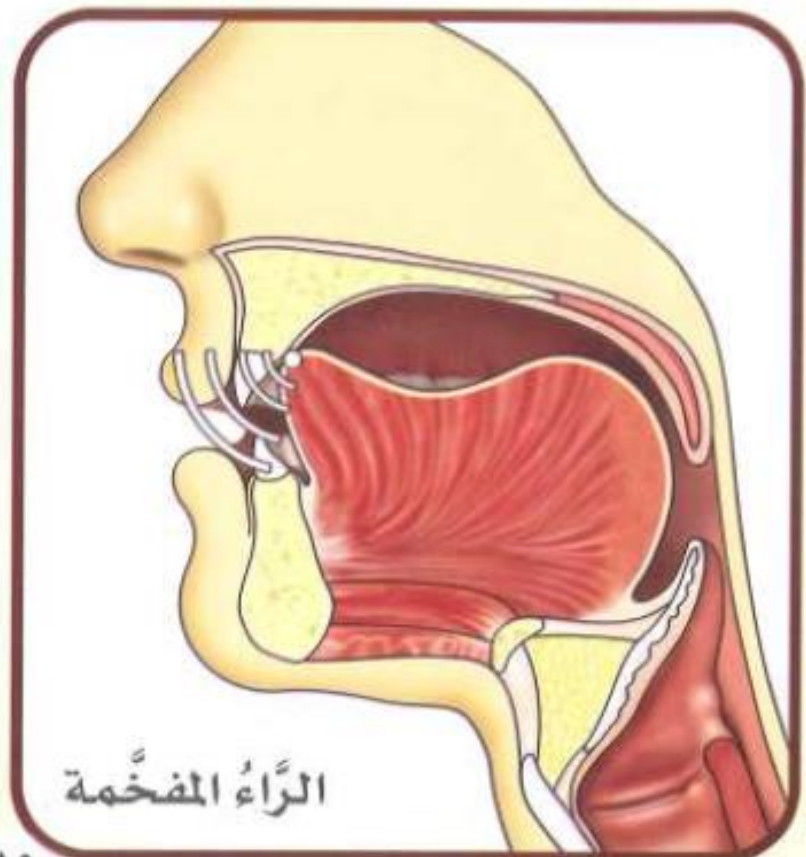


The gap that the part of voice go out through it when we want to pronounce الراء.

The different between Tafkheem and Tarqeeq in الرّاء



Tarqeeq



Tafkheem